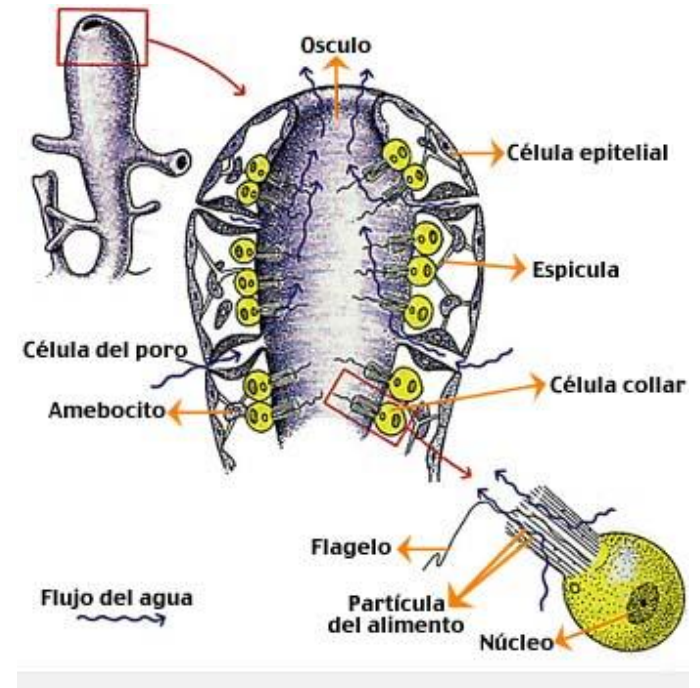
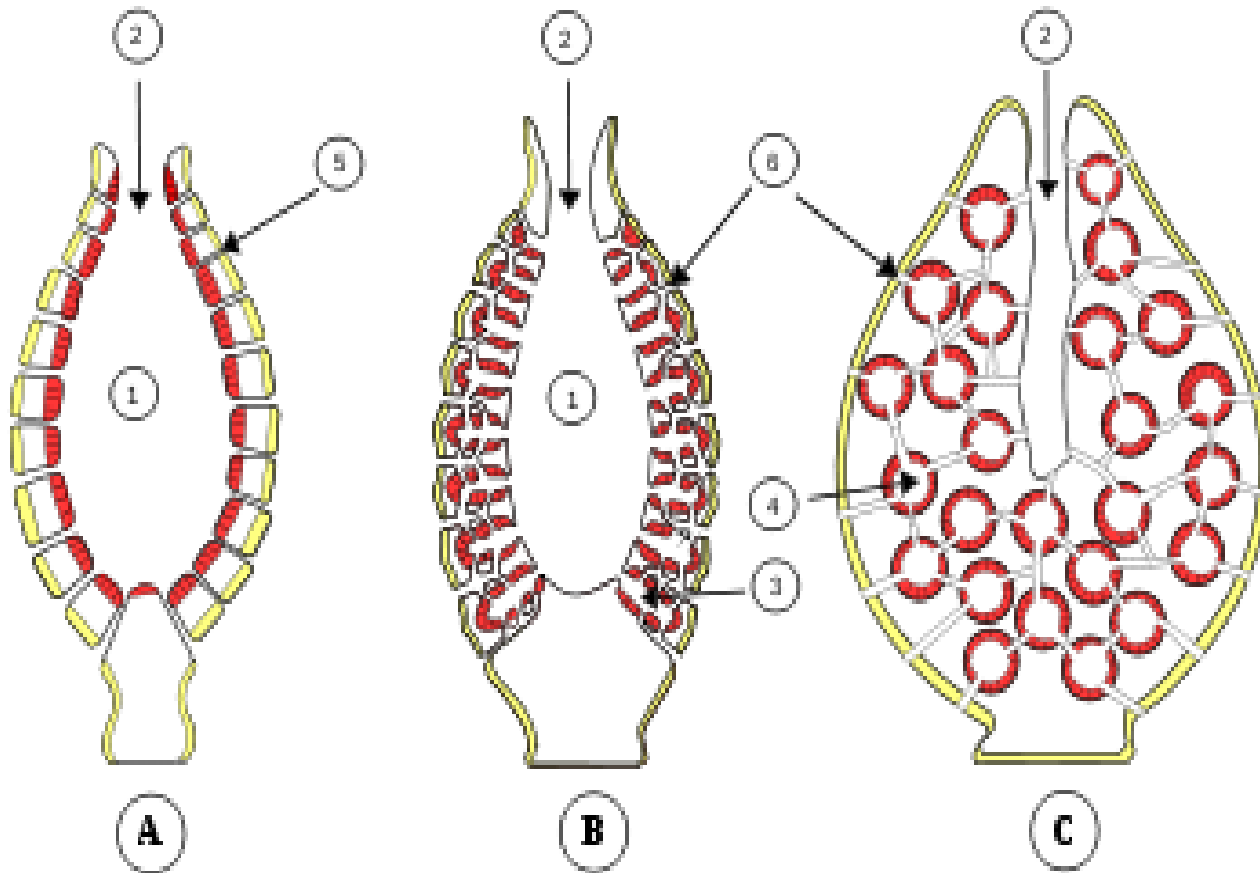
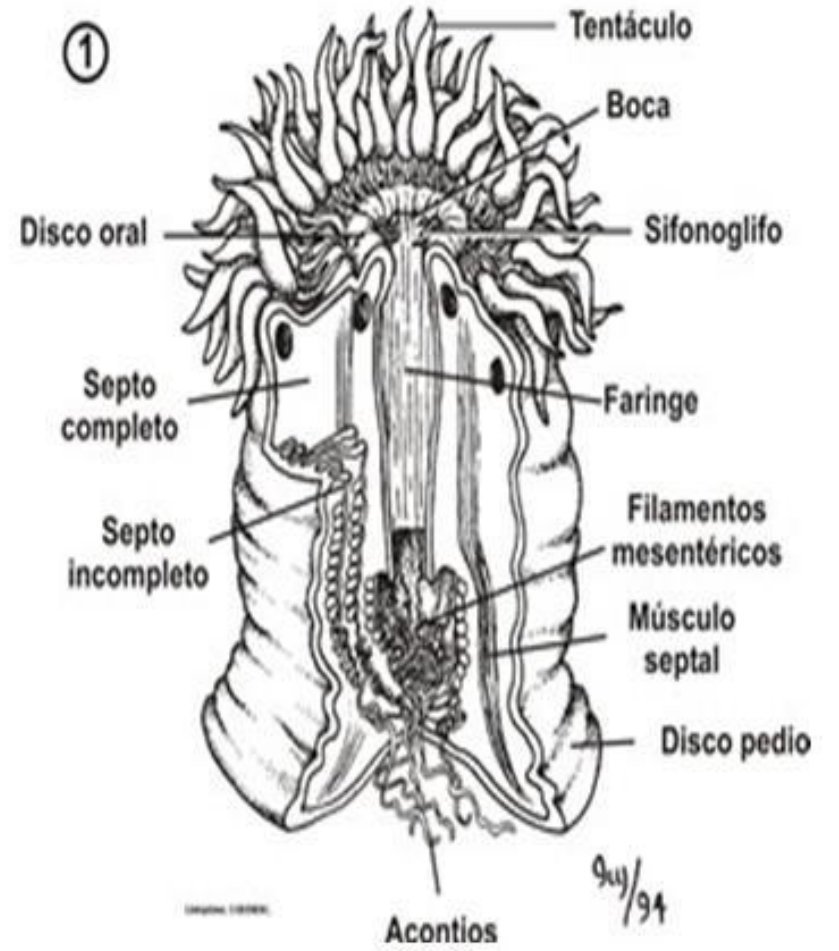
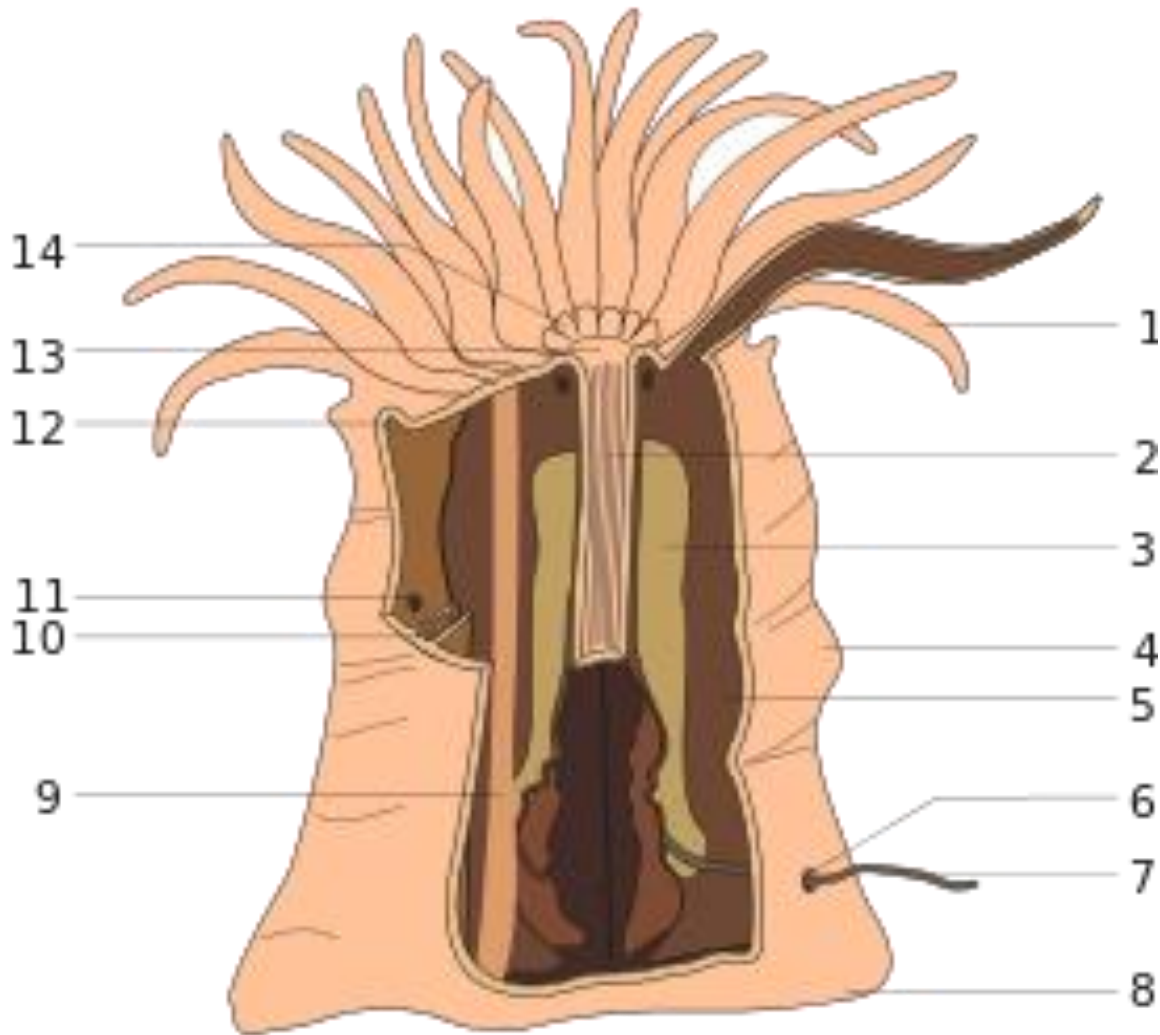


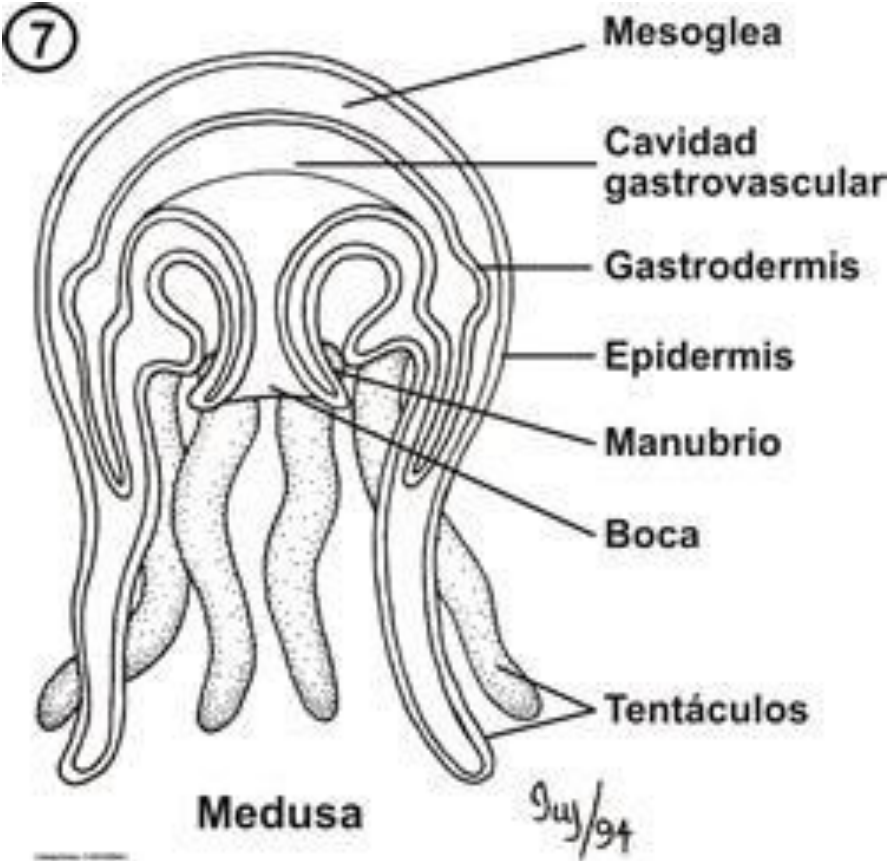
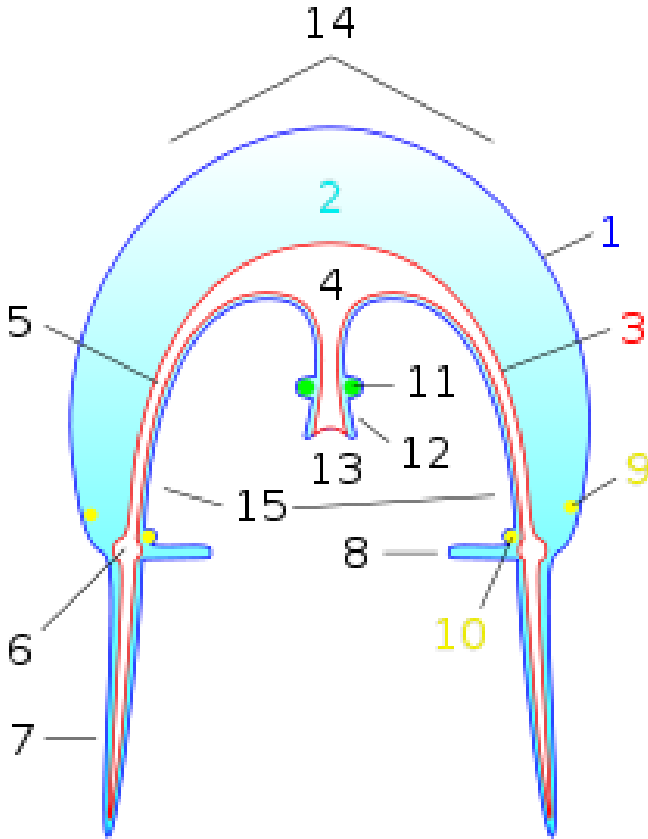
ANATOMIA INTERNA DE UNA ESPONJA



ANATOMIA INTERNA DE UNA ANEMONA (CNIDARIO TIPO PÓLIPO)



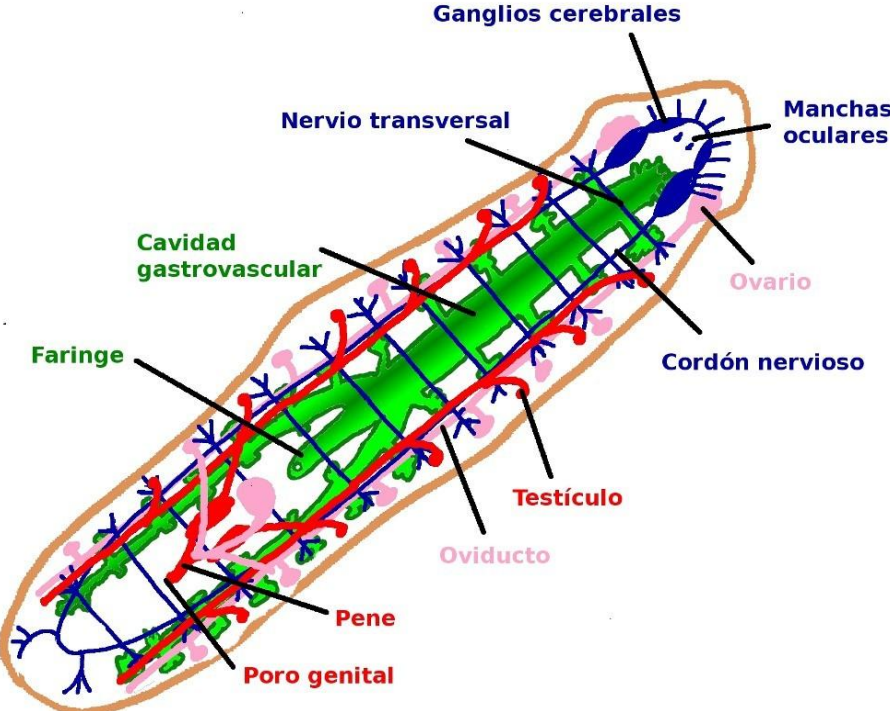
ANATOMIA DE UNA MEDUSA



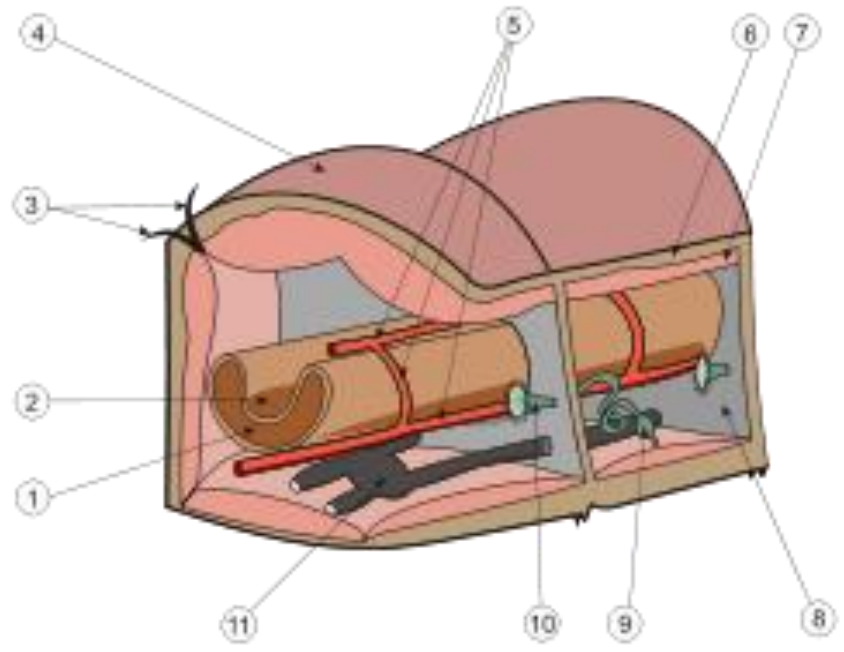
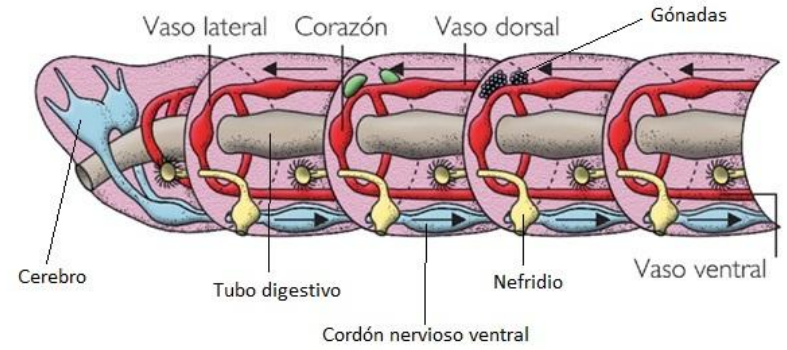
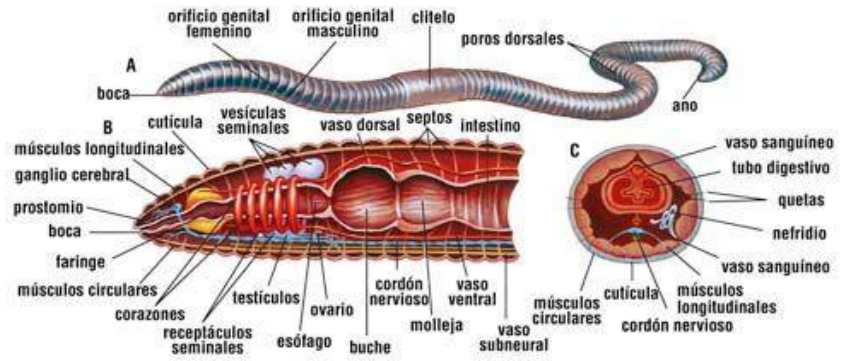
ANATOMIA INTERNA DE PLATELMINTO (PLANARIA)



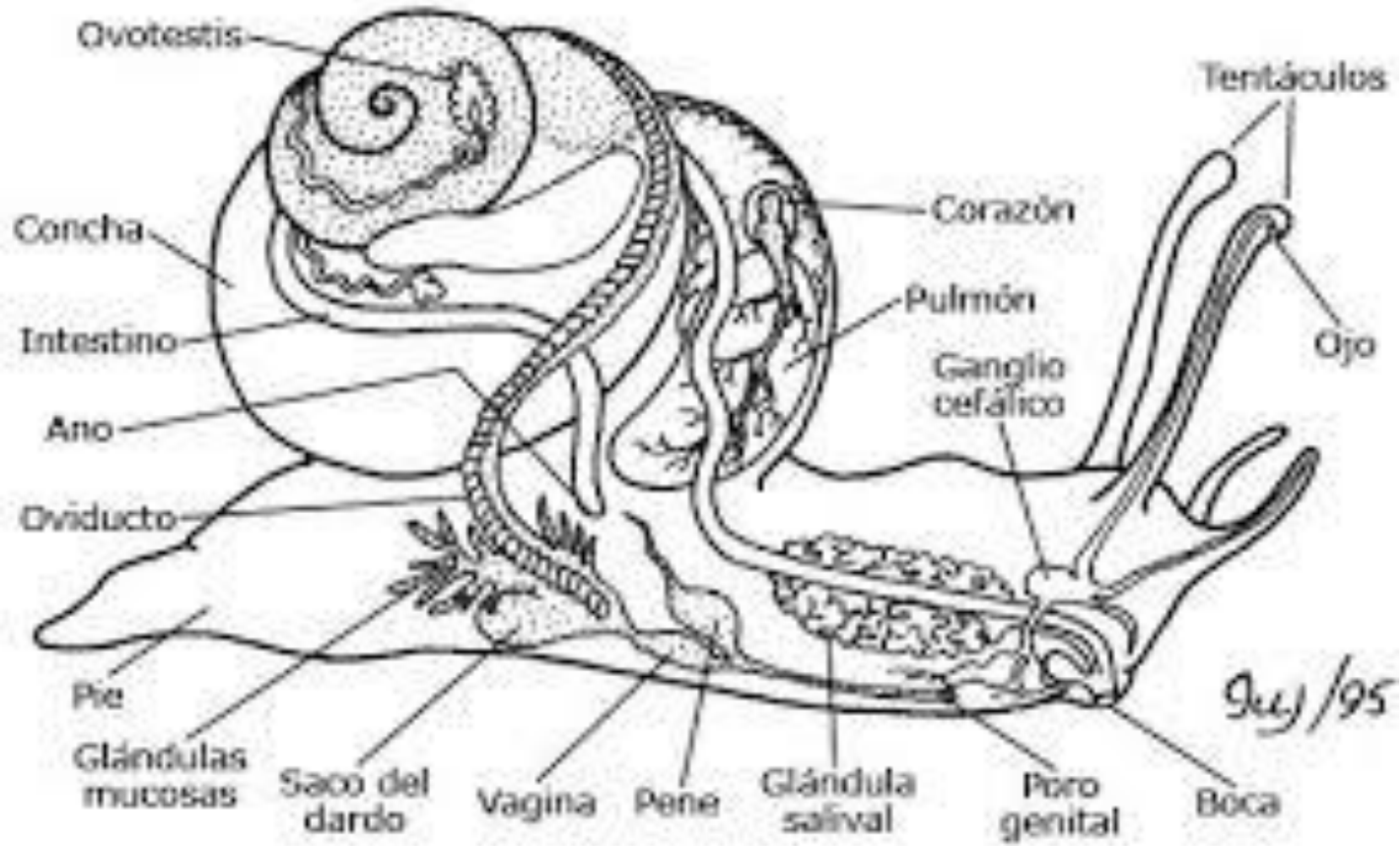
Livingstone, © BIODIDAC.



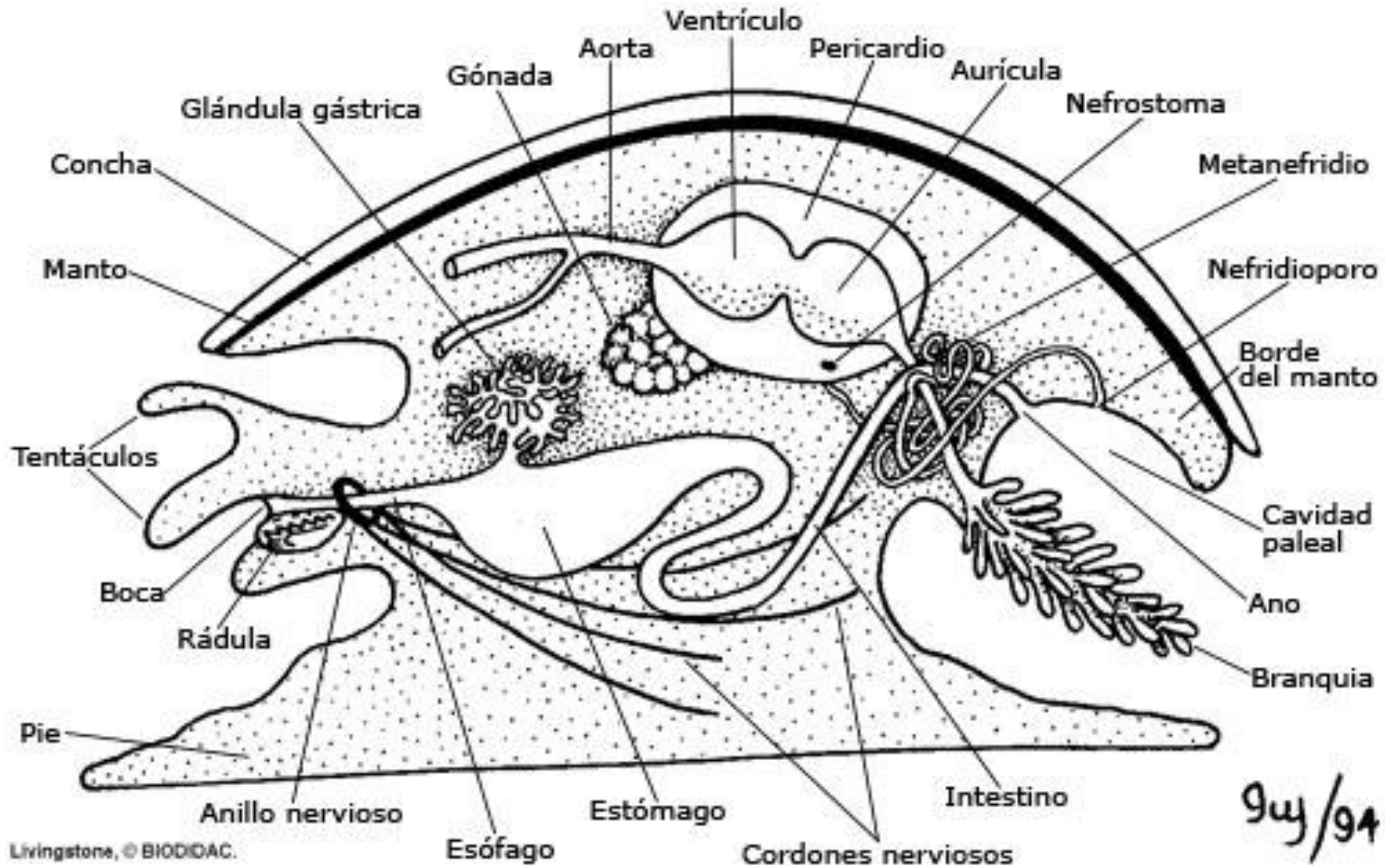
ANATOMIA INTERNA DE UN ANELIDO



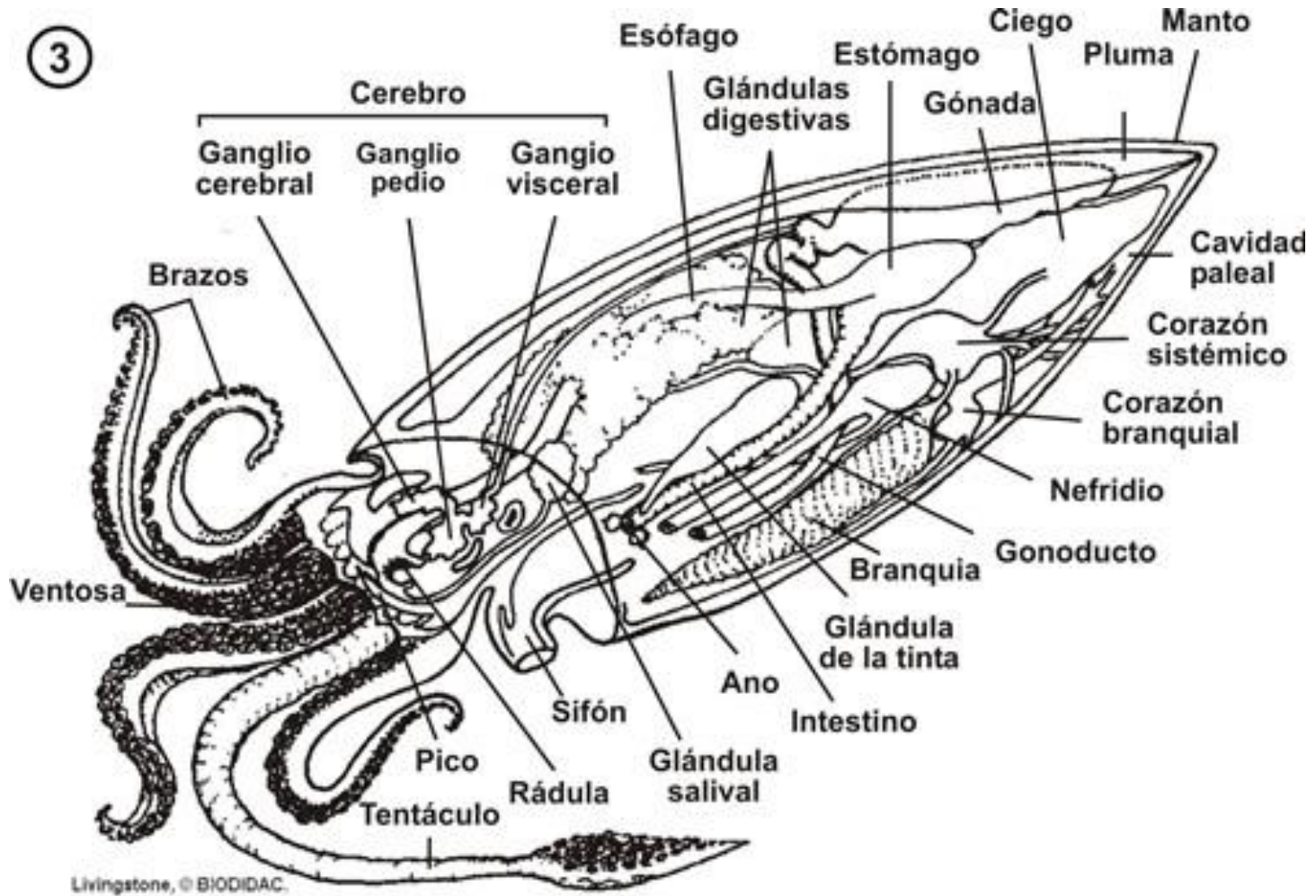
ANATOMIA INTERNA DE UN MOLUSCO (GASTEROPODO)



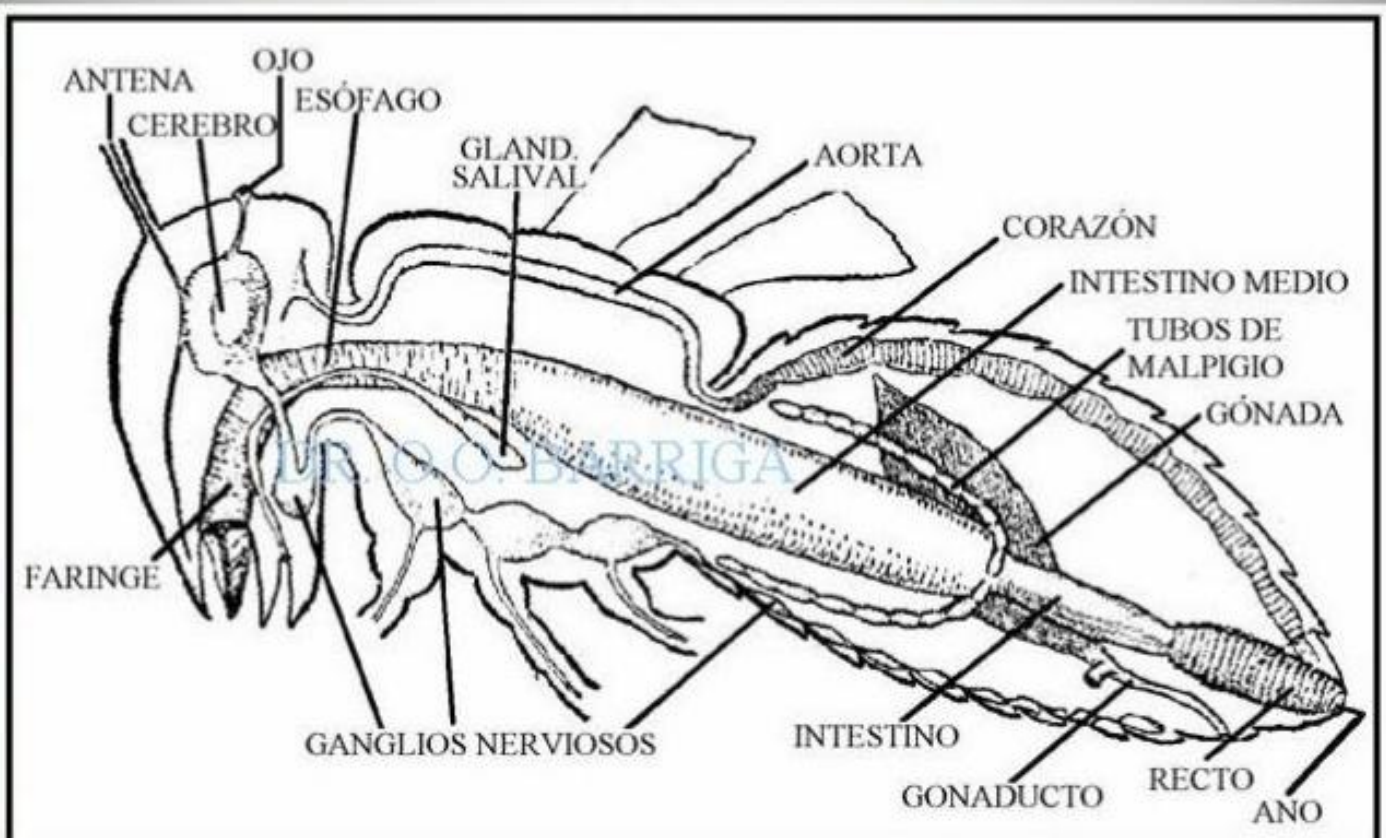
ANATOMIA INTERNA DE UN MOLUSCO (BIVALVO)



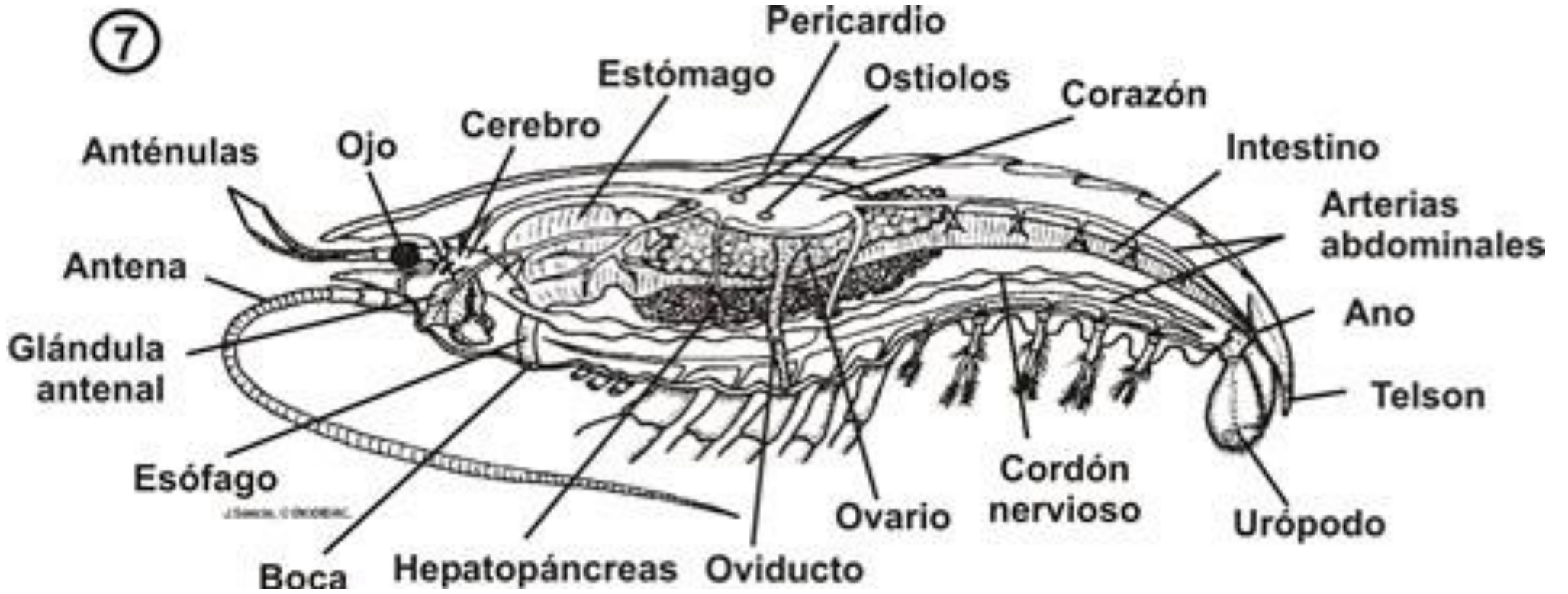
ANATOMIA INTERNA DE UN MOLUSCO (CEFALOPODO)



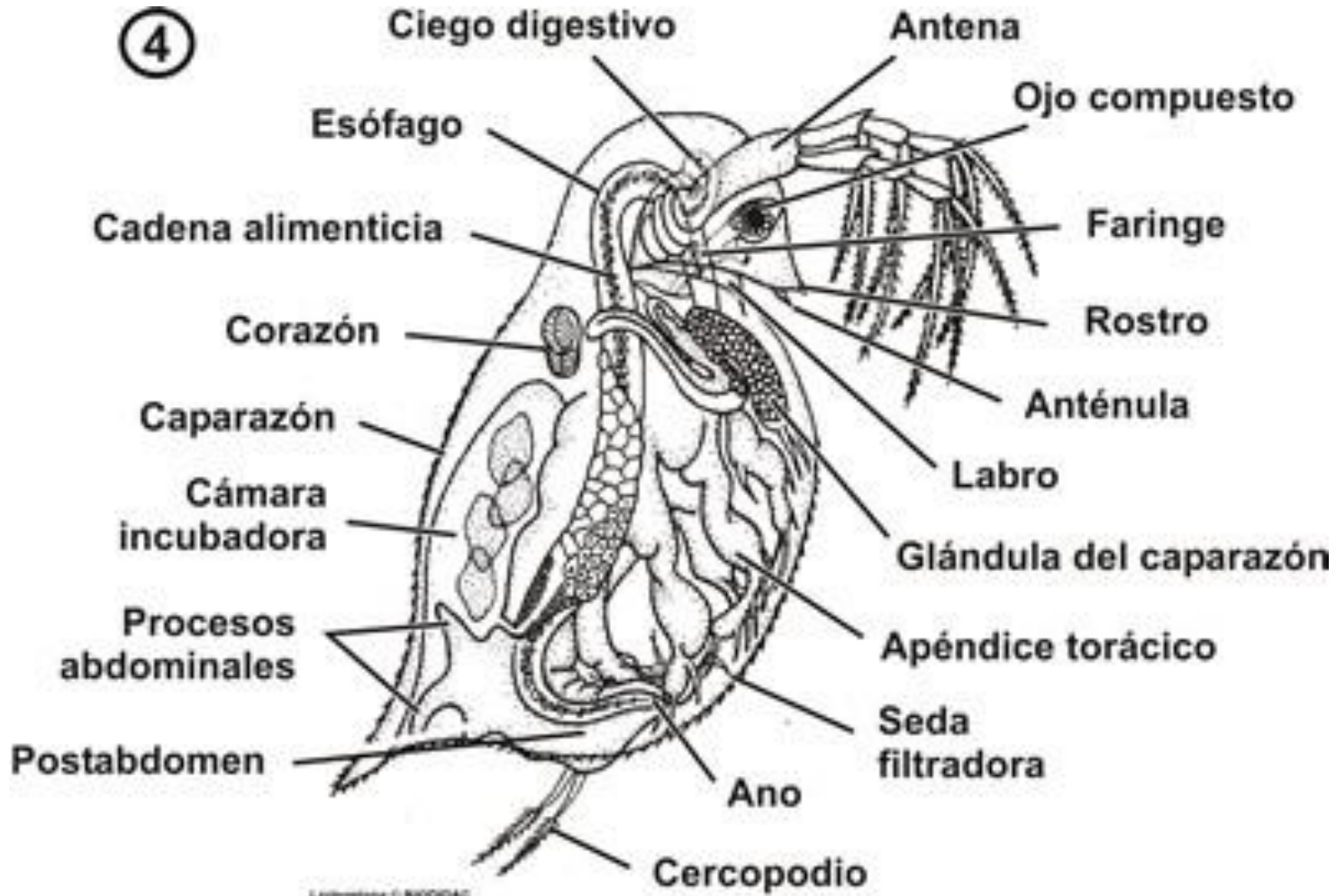
ANATOMIA INTERNA DE UN ARTROPODO (INSECTO)



ANATOMIA DE UN ARTROPODO (LANGOSTINO)

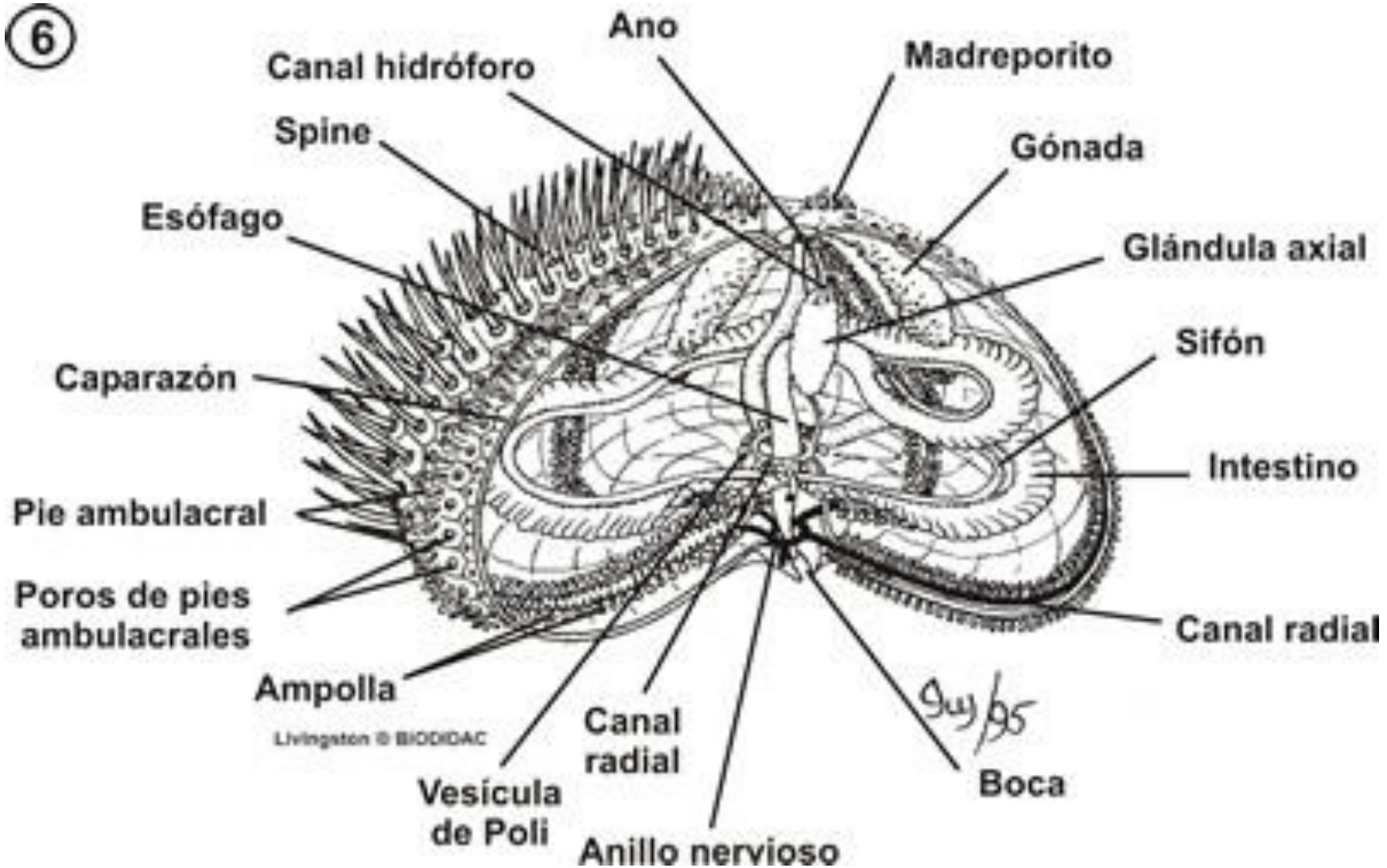


ANATOMIA INTERNA DE UN ARTROPODO (EUMALACOSTRACEO, PULGA DE AGUA)

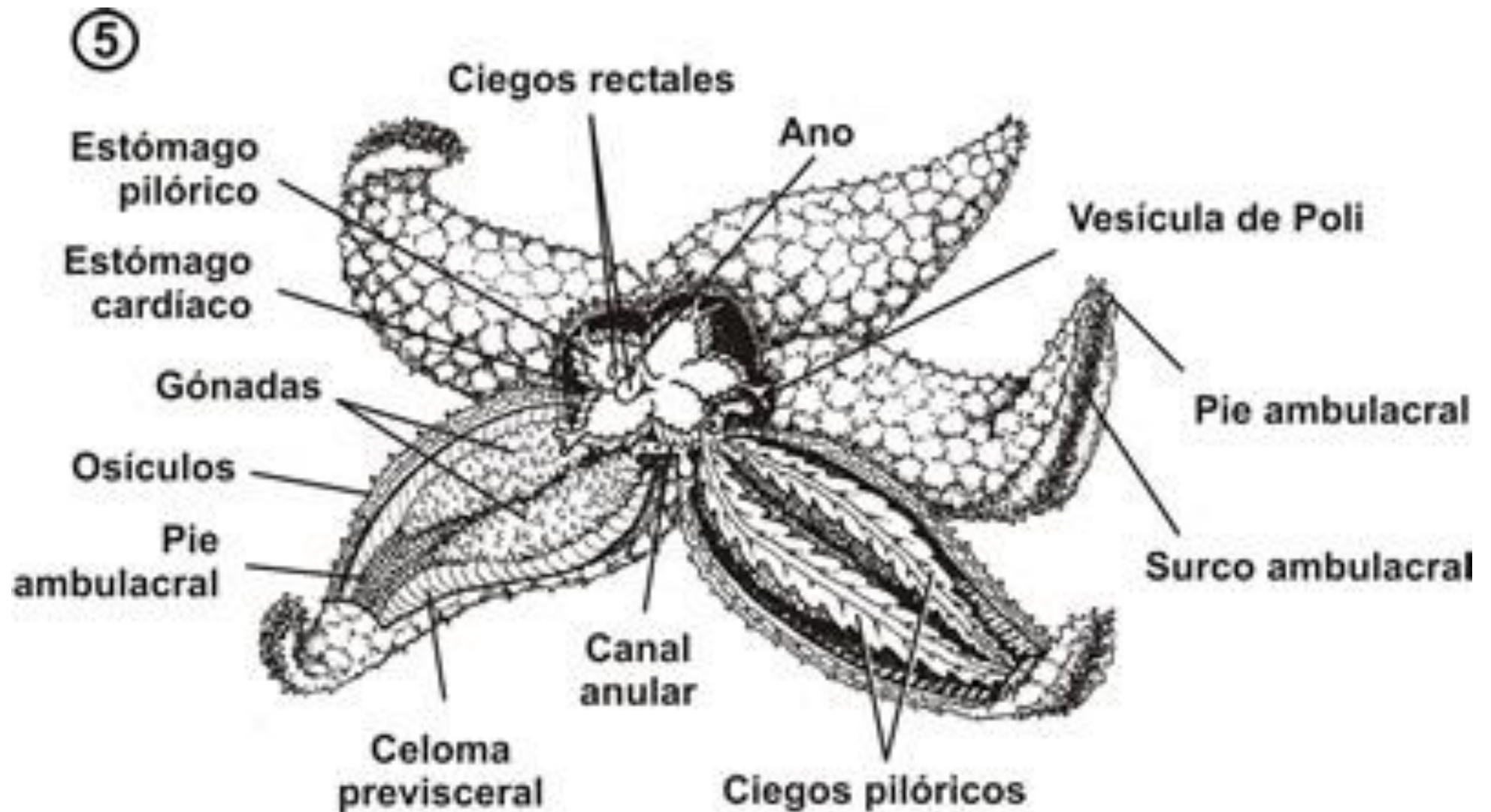


ANATOMIA INTERNA DE UN EQUINODERMO (ERIZO DE MAR)

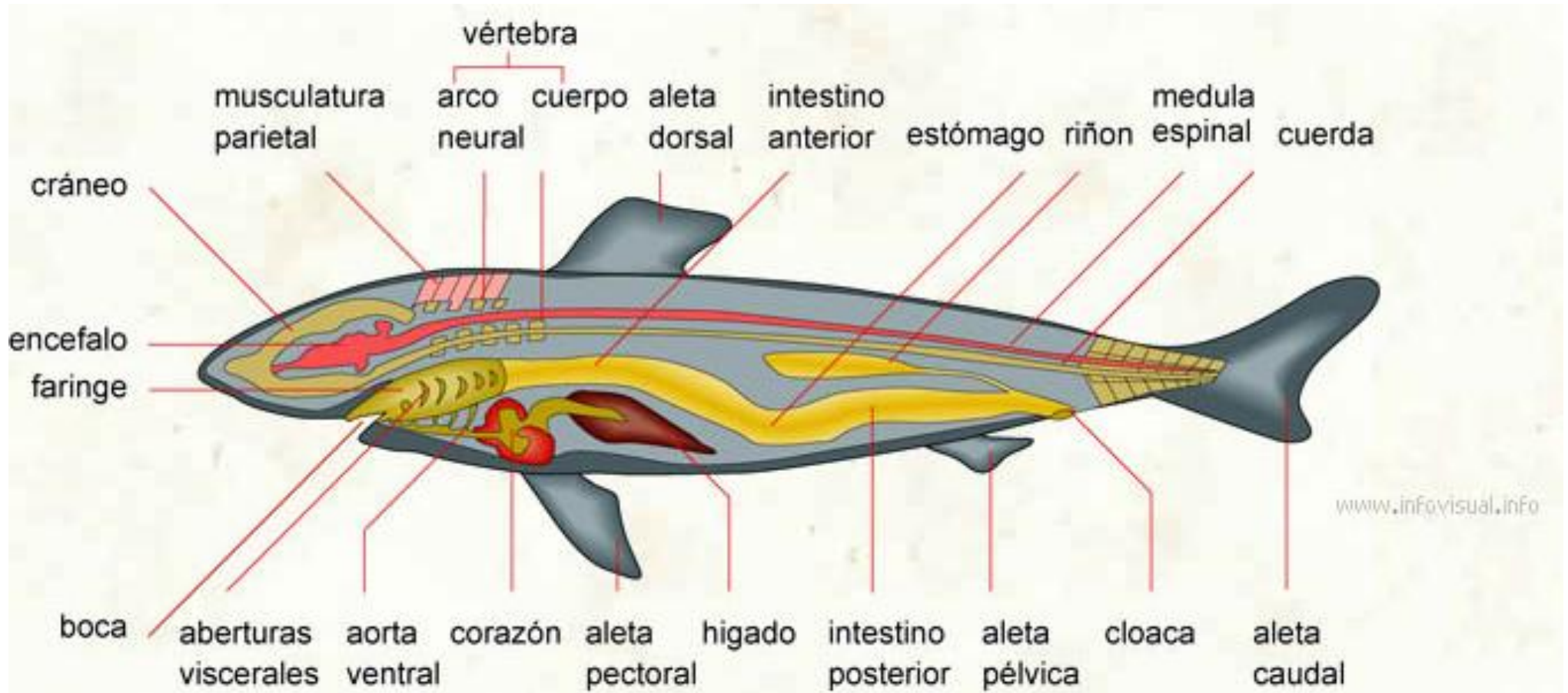
6



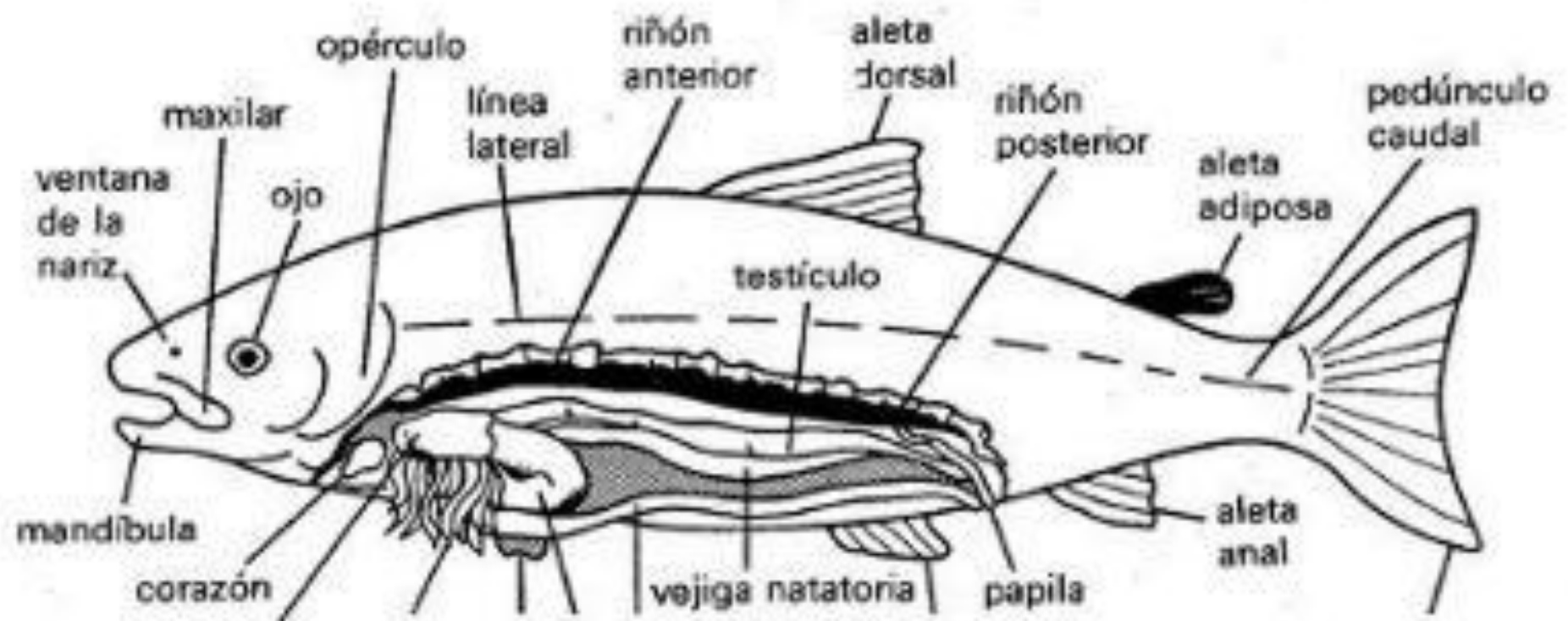
ANATOMIA INTERNA DE UN EQUINODERNO (ESTRELLA DE MAR)



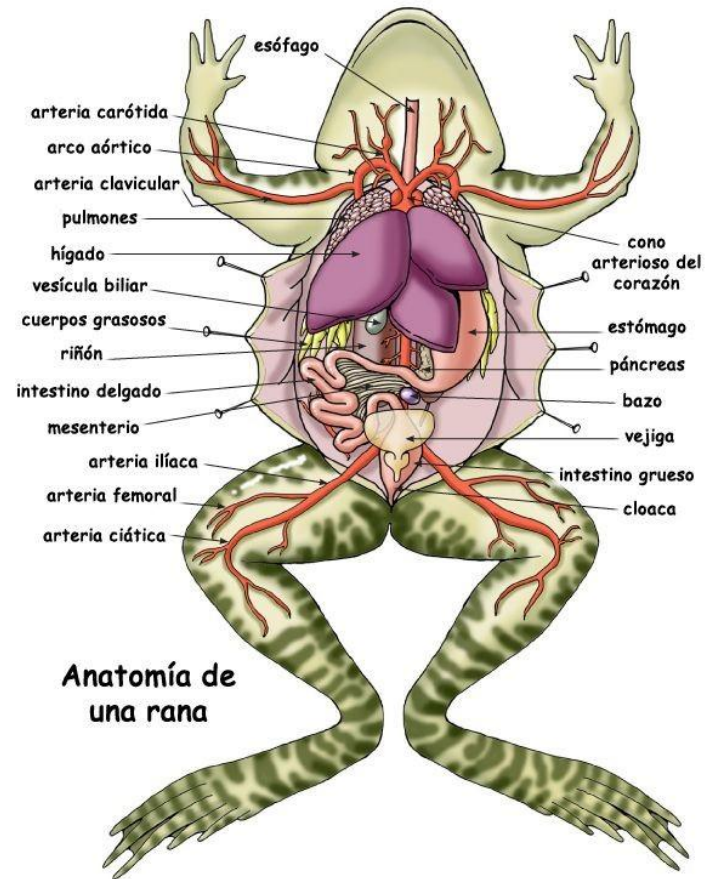
ANATOMIA INTERNA DE UN VERTEBRADO (PEZ CARTILAGINOSO)



ANATOMIA DE UN VERTEBRADO (PEZ ÓSEO)



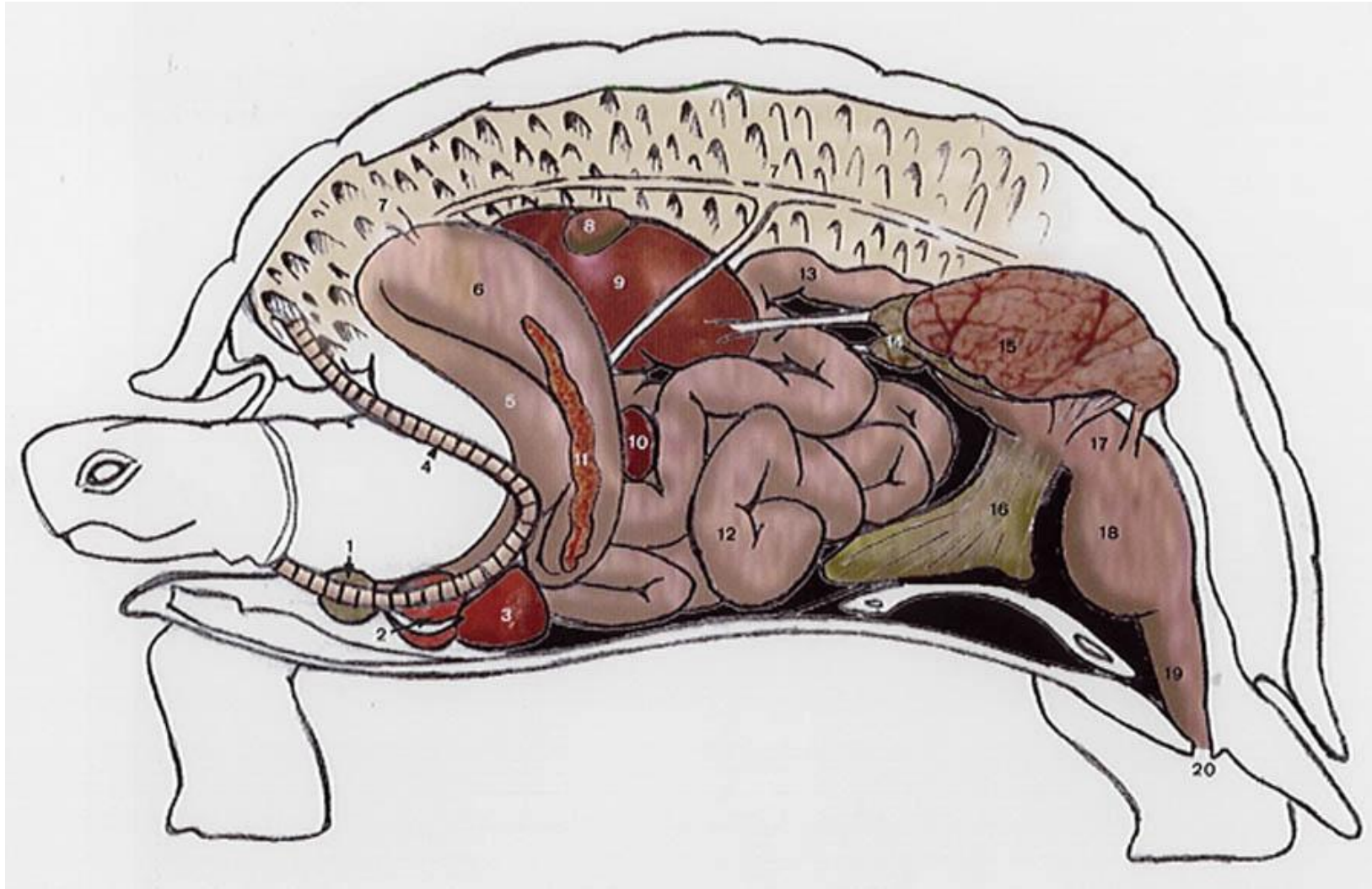
ANATOMIA INTERNA DE UN VERTEBRADO (ANFIBIO)



Anatomía de una rana

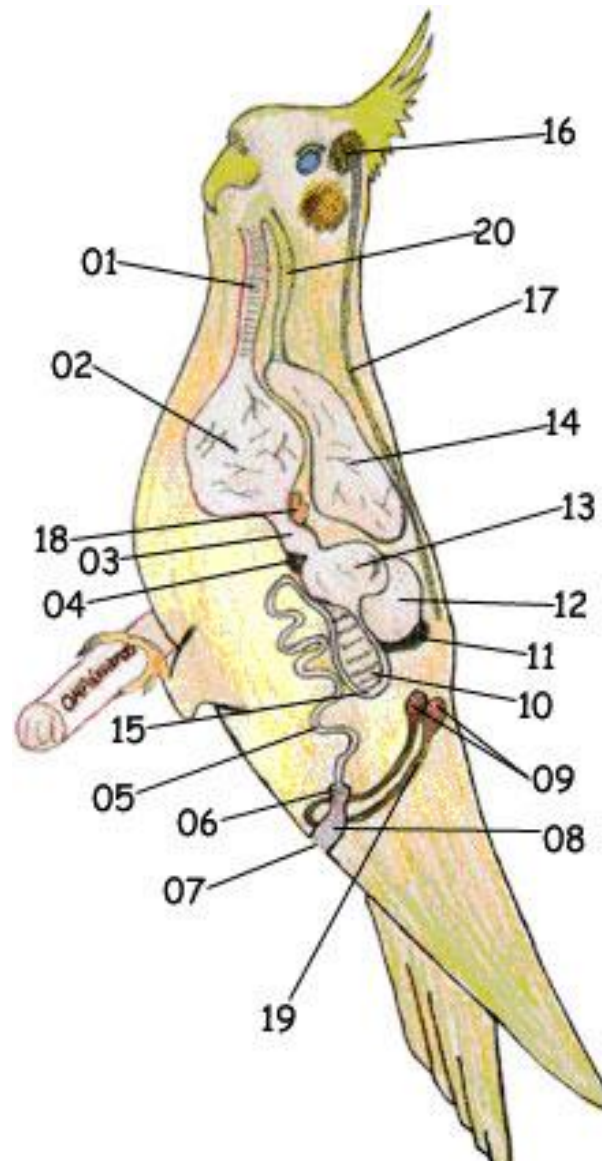
ANATOMIA INTERNA DE UN

VERTEBRADO (REPTIL)



INTERNA DE UN VERRTEBRADO (AVE)

ANATOMIA



ANATOMIA INTERNA DE UN VERTEBRADO (MAMIFERO)

